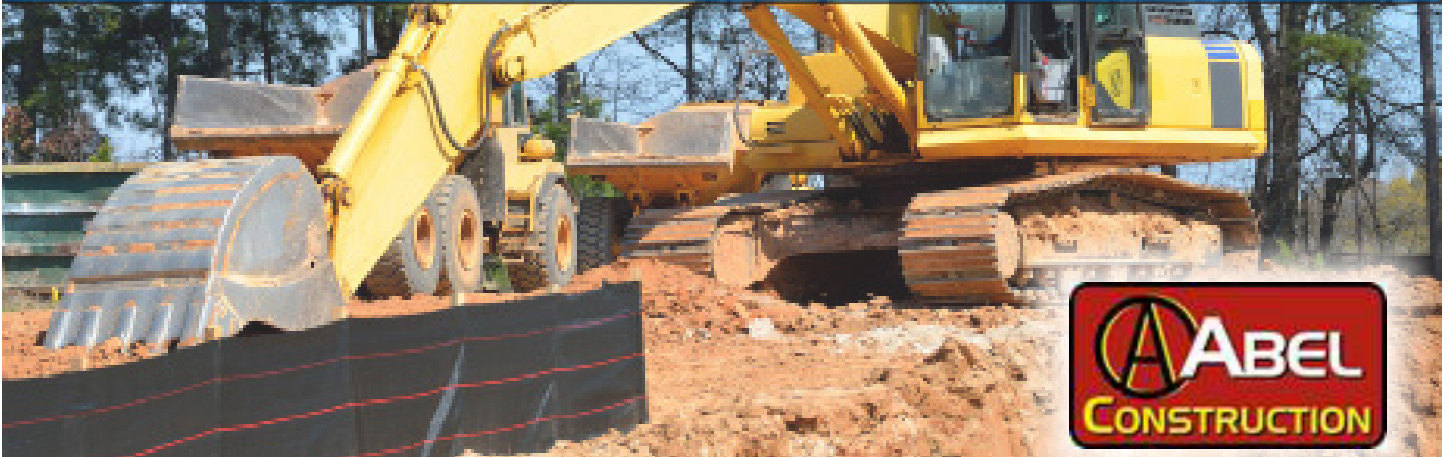


CELEBRATING CAREERS IN CONSTRUCTION



Mitch Nye

VP of Business Development, Abel Construction Company

How Did You Get Started In The Skilled Trades?

I started part-time with Abel Construction my senior year of high school, washing trucks and equipment at our shop in Hellam, not really knowing what I wanted to do as a career. I enjoyed the industry, so after taking general education credits at Penn State York, I enrolled in the BCM (Bachelor of Construction Management) program at Penn Tech. I continued to work summers in the field at Abel, as a pipe layer and general laborer. After graduating with a degree, I was offered a position as a PM/Estimator, and was recently promoted to VP of Business Development.



If You Could Do It All Over Again, Would You Choose The Same Career Path?

Yes, while the industry can be frustrating at times due to regulation and red tape, the actual work is very rewarding and has provided a stable income for our family.

What Do You Love About Your Career?

There are so many unique influences on every project. The challenge is navigating those with the stakeholders, so that the outcome has a positive influence on the surrounding community, and is profitable for our client and our company. That's the reward!

What's Your Advice For A Young Person Unsure About The Future And A Career Path?

Pick a career path and try it out. It doesn't mean you're locked in forever. Be humble and soak up as much knowledge about that particular craft as you can. It will help you down the line as you advance in that field and if you decide to change career paths, you'll have the benefit of a diverse background.



powered by
YORK BUILDERS
SCHOOL DISTRICT